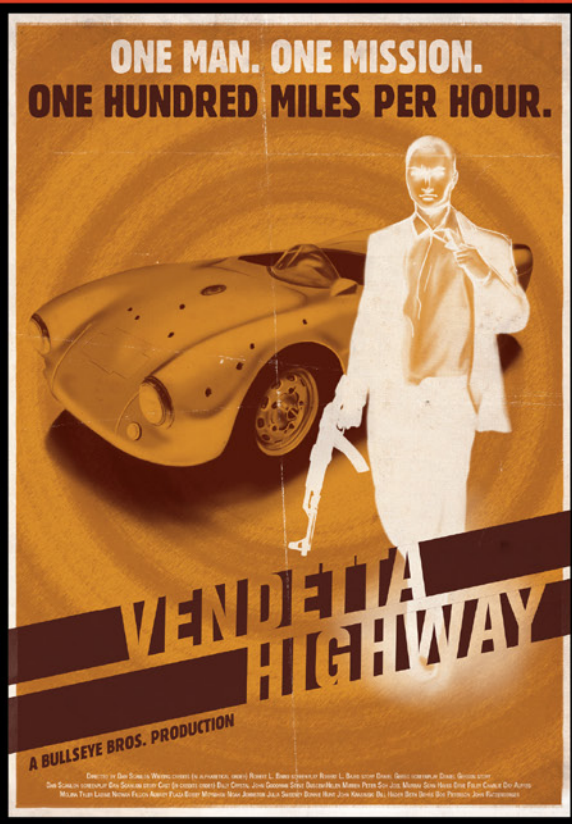




## MARK M WONG

- ◆ DESIGN
- ◆ MAC PRODUCTION
- ◆ ILLUSTRATION

021 169 8003    [mark@mmwdesign.co.nz](mailto:mark@mmwdesign.co.nz)



ANTHONY CANNON'S  
SECRET AGENT SCORPIO IN:  
**KISS OF THE  
RED WIDOW**



**RETRO MOVIE POSTERS**

CLIENT 4i's PROCESSES ILLUSTRATION / DESIGN

A suite of retro movie poster pastiches designed as part of a 4i's self-promotional piece.

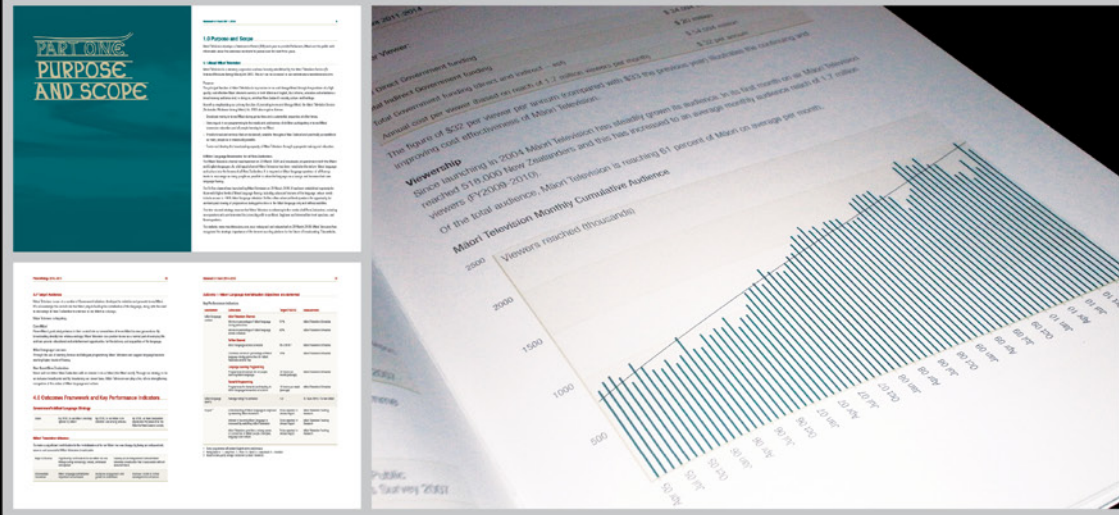


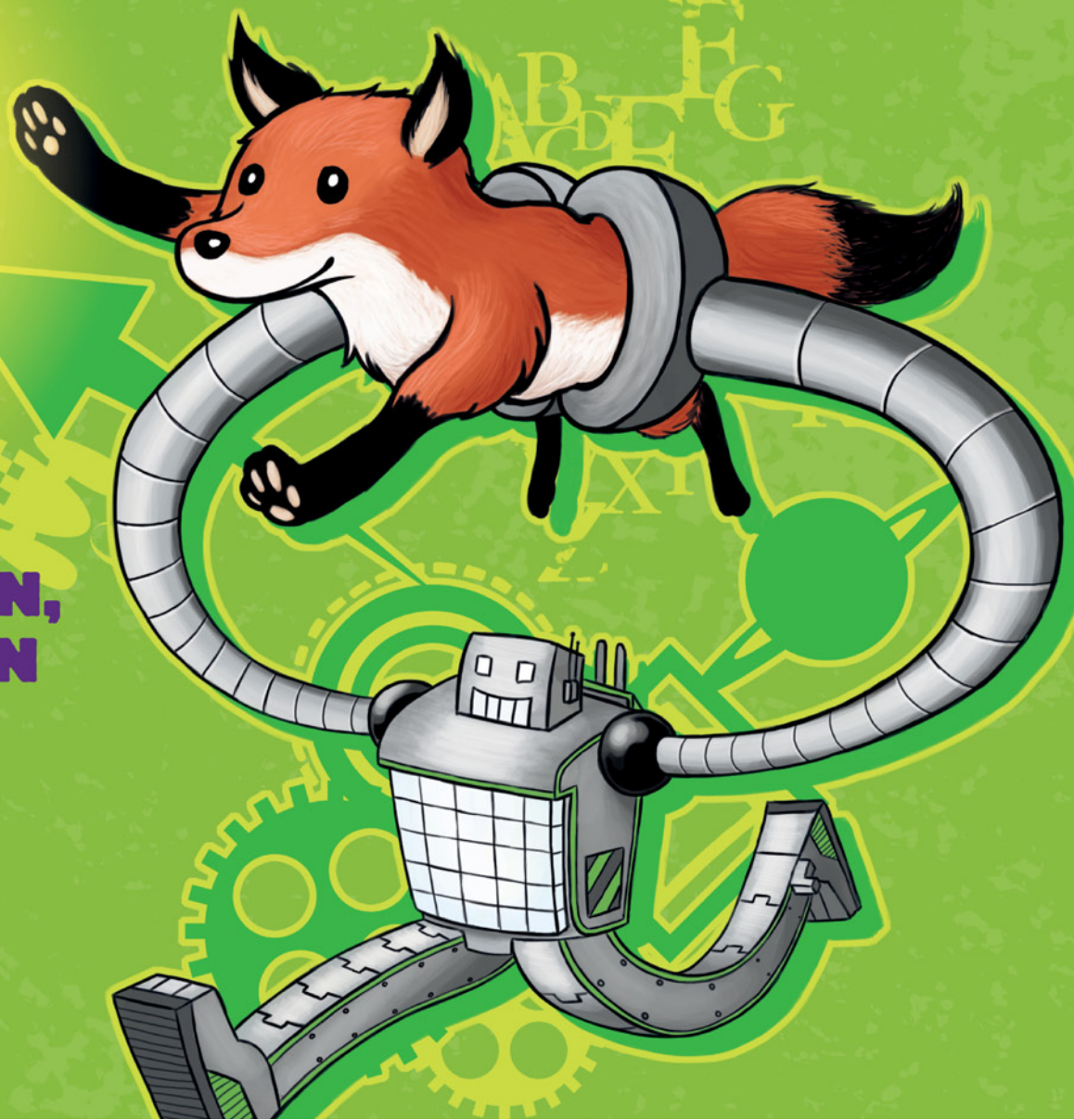
## “PURE DISCOVERY” DISCOVERYSCAPES

CLIENT NEW ZEALAND WINEGROWERS PROCESSES RETOUCHING

Photo manipulation and retouching of a series of images dubbed “Discoveryscapes” for New Zealand Winegrowers. The aim of the campaign was to embody the slogan “Work of our hand, grown by our land” by blending vineyard imagery with artistic patterns and craftwork found within the culture of New Zealand.

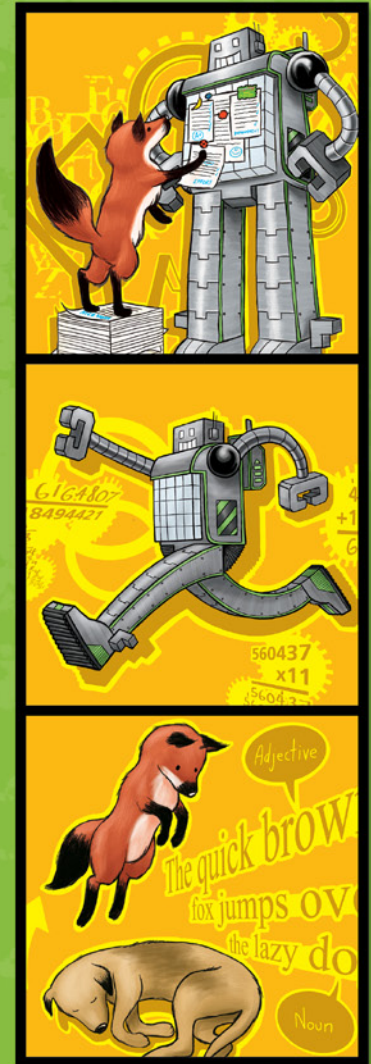






**WITH OUR  
EXPERT TUITION,  
YOUR CHILDREN  
CAN REACH  
EVEN GREATER  
HEIGHTS.**

*NumberWorks'nWords*



**NUMBERWORKS'NWORDS**

CLIENT NUMBERWORKS'NWORDS (FORMERLY NUMBERWORKS) PROCESSES ILLUSTRATION / LOGO DESIGN / CHARACTER DESIGN / COPY WRITING

Advertisement illustrations and design for international tutoring company NumberWorks'nWords to help promote their rebranding. Along with a new logo, two new mascots were designed: the Robot representing maths, and the (quick brown) Fox for English.



# WILDCARD

CLIENT SKYCITY PROCESSES MAC PRODUCTION / DESIGN

As well as designing SKYCITY's staff newsletter, Wildcard, I have personally laid out more than 100 issues. Each of the fortnightly newsletters is A3-folded-to-A5 and contains unique content. Even so, Wildcard is produced effortlessly under stringent deadlines.



STEREO

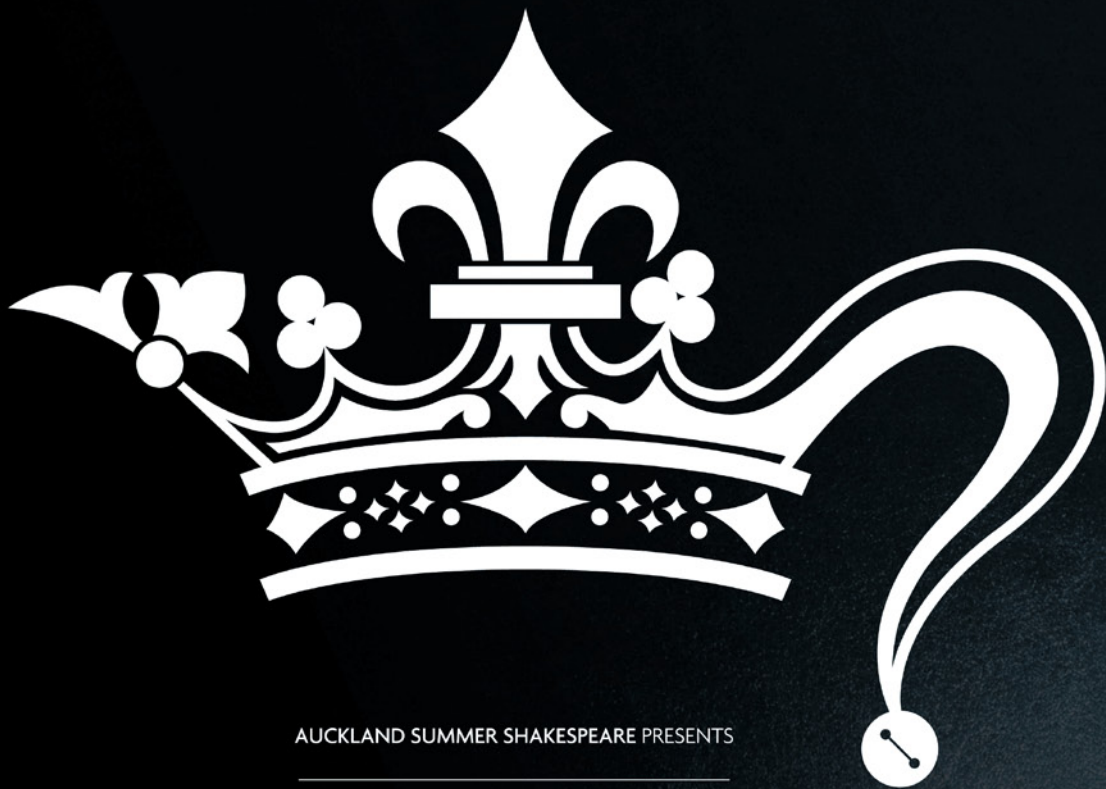
# NANCY & LEE



## TRIBUTE TO NANCY & LEE

CLIENT SELF PROMO PROCESSES ILLUSTRATION / DESIGN

A digital illustration inspired by one of my favourite albums:  
Nancy Sinatra and Lee Hazlewood's 1968 release *Nancy & Lee*.



AUCKLAND SUMMER SHAKESPEARE PRESENTS

SHAKESPEARE'S  
**KING LEAR**

CELEBRATING 50 YEARS OF OUTDOOR SHAKESPEARE  
AT THE UNIVERSITY OF AUCKLAND



**KING LEAR PROGRAMME**

CLIENT UNIVERSITY OF AUCKLAND / NIGHTBIRD COMMUNICATIONS PROCESSES MAC PRODUCTION / DESIGN

Design and layout of a 24-page programme for the University of Auckland's Summer Shakespeare production of *King Lear*. The document contains an assortment of articles and essays and has been added to Washington DC's Folger Shakespeare Library.



numberworks'nwords **ARCADE** more than just fun and games

Brought to you by **NumberWorks'nWords** Specialist Maths tuition and English tuition

Steve Storm and the Tables of Doom

Join intrepid adventurer Steve Storm on his journey to uncover the Lost Table of Power! Stranded in the wild jungles of Numerica, our brave hero must overcome treacherous pitfalls, poisonous frogs and manic monkeys to succeed! Can you help him topple the Tables of Doom?

More games coming soon!

STEVE STORM AND THE **TABLES OF DOOM**

An exciting new NumberWorks'nWords Arcade game! **PLAY NOW!**



## STEVE STORM AND THE TABLES OF DOOM

CLIENT NUMBERWORKS'NWORDS PROCESSES ILLUSTRATION / DESIGN / MAC PRODUCTION / COPY WRITING

Identity design and website concept for NumberWorks'nWords' educational game site NumberWorks'nWords Arcade, as well as title design for their inaugural game, *Steve Storm and the Tables of Doom*. Promotion for the game included an illustrated comic-style brochure and online advertisements.



ORIGINAL

RETOUCHED

## HUNTAWAY FOOD MATCHES

CLIENT LION NATHAN / HUNTAWAY RESERVE PROCESSES RETOUCHING

Photo manipulation and retouching for Huntaway Reserve's food matching photo set. The art direction called for a mature and moody atmosphere which highlighted the inviting flavours of the food and wine.



**100 Cousins**

MASSIVE COMPANY  
WITH STAMP AT THE EDGE® PRESENTS

CONTEMPORARY MYTH  
MEETS URBAN AUCKLAND – A STORY  
OF DREAMS, REALITY, WANTS AND NEEDS

WRITTEN BY BRIAR GRACE SMITH  
DIRECTED BY SAM SCOTT

**MAR 31-APR 22**  
BOOK TICKETEK 09 307 5000 [WWW.MASSIVECOMPANY.CO.NZ](http://WWW.MASSIVECOMPANY.CO.NZ)

MASSIVE COMPANY  
STAMP creative NZ  
ARS AUNE AUCKLAND CITY Playmarket KIM CROFT



## 100 COUSINS

CLIENT MASSIVE COMPANY PROCESSES DESIGN / MAC PRODUCTION / ILLUSTRATION

Illustration and design for Massive Company's stage production *100 Cousins*. The campaign's two-colour collateral included street posters, banners, flyers and press ads.



## CITIZEN Q FUNDRAISING BOOKLET

CLIENT Q THEATRE PROCESSES MAC PRODUCTION / DESIGN

Design and production of a fundraising booklet for Q Theatre's bar and cafe known as Citizen Q.



## KILLER NIGHTLIFE

CLIENT SELF PROMO PROCESSES ILLUSTRATION

A conceptual poster for a possible adventure series.